

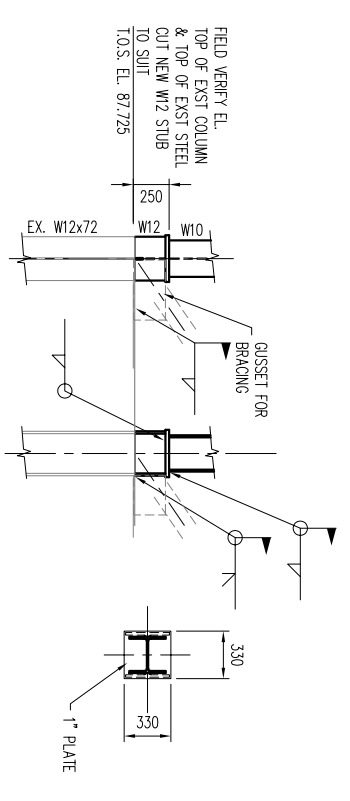
FOR EXISTING STRUCTURE REFER TO HOLCIM DRAWINGS 6304-13 TO 6304-17

**SECTION 1**  
LINE 2X  
6304-031

**SECTION 2**  
LINE 2X  
6304-031

**SECTION 3**  
LINE 2X  
6304-031

**SECTION 4**  
LINE 2X  
6304-031



**DETAIL 1**

**ALL BRACING AND BEAM COLUMN CONNECTIONS SHALL BE "SLIP CRITICAL" BOLT CONNECTIONS.**

**NOTES**

- 1. FOR NOTES SEE DWG 6304-031
- 2. ALL STRUCTURAL STEEL MEMBERS & PLATE BRACES TO BE ASTM A572 GRADE 50 EXCEPT CHANNELS, ANGLES, GIRDERS, AND BOLTS WHICH ARE ASTM A508 UNF. O.
- 3. EXIST PLATFORMS HOLCIM DWG: 10843-6304-013 & 14

DATE	BY	REVISIONS
04/27/04	JR	1 CHANGED DRAWING NO. FROM 6404-033 TO 6404-052

**Holcim (US) Inc.**  
HOLLY HILL, SC

81 HANDBROOK CRT. 704  
HOLLY HILL, SC 29922  
TEL: (803) 669-1150  
FAX: (803) 669-1158

**Engineers Inc.**

ENGINEER

PROJECT: CEMENT STORAGE RECLAIM TOWER EXTENSION SECTIONS

SCALE: 1" = 1'-0"

DRAWING NUMBER: 10843-6304-052

REV: 1